

CERTIFICATE OF LOCATION OF GOVERNMENT CORNER

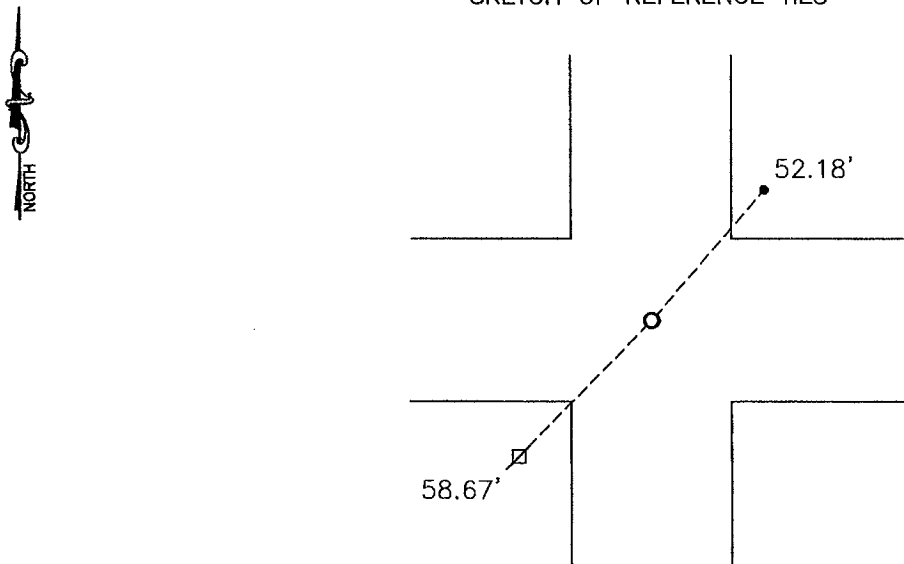
NORTHEAST Corner of Section 11, Township 108, Range 40, 5TH P.M.

STATE OF MINNESOTA, County of MURRAY

At the corner location shown on the sketch:

- On _____ found a _____
DATE
- left monument as found, lowered monument, removed monument (explain)
- On 11-29-2008 placed a SURVEY SPIKE WITH SEAL #43844
DATE

SKETCH OF REFERENCE TIES



Minnesota State Plane Coordinate
System Murray County Datum
NAD83 (1996)

N: 221599.518
E: 543049.420

Nail and bottle cap in power pole SW 58.67'
3/8" iron NE 52.18'

Statement of evidence relative to this corner location is on back of page.

I hereby certify that this document and the data contained herein was prepared by me or under my direct supervision.

David Bunker Jan 6, 2009
SIGNATURE DATE

Registration No. 43844

- Land Surveyor, Professional Engineer
- County Surveyor, County Engineer

OFFICE OF THE COUNTY RECORDER
County of _____

I hereby certify that this document was filed in the Co. Recorders office at _____ .M on the _____ day of _____ A.D. 20 _____

County Recorder *James V. Johnson*
By _____, Deputy

DOCUMENT NO. JUL 10 2009

Statement of Evidence

In October, 1861, Lewis Brockman did the original subdivision of the township.

On April 8, 1992, the Murray County Highway Department found a steel pin at the corner, and set a $\frac{1}{2}$ " x 8" rebar over it.

On August 29, 2008, Buettel-Moseng Land Surveying found nothing at the corner. We set a survey spike with seal #43844 using the ties that the Murray County Highway Department recorded in 1992.